

DevOps – Das neue Schwarz



FrOSCon – 24. + 25.08.2013



Markus

Rekkenbeil



@bionixit



www.bionix-it.de



github.com/bionix



Sysadmin @
Mobi4Friends GmbH

Buzzword **Bingo**

aka Agenda

VORSTELLUNG	DEVOP	TOOLS
AUSTAUSCH	KULTUR	AUTOMATISIERUNG
MESSUNGEN	BEISPIELE	KONFLIKTE

Profile summary



DevOps Borat
@DEVOPS_BORAT

Cultural Learnings of DevOps for Make Benefit Glorious Teams of
Devs and Ops.

Kazakhstan · [imdb.com/title/tt044345...](https://www.imdb.com/title/tt044345...)

Profile summary



DevOps Borat @DEVOPS_BORAT

26 Feb 11

To make **error** is **human**. To propagate **error** to all server in automatic way is **#devops**.

Expand

Kazakhstan · imdb.com/title/tt044345...

Was sind **DevOps**?



Development

CODERS

JUST WANNA

CODE



Operations





Konflikte?!



Die **Kultur**bewegung

culture
is Not a Crime

Zusammenführung von Dev & Ops





1. DevOpsDay **2009** in Belgien

Automatisierung

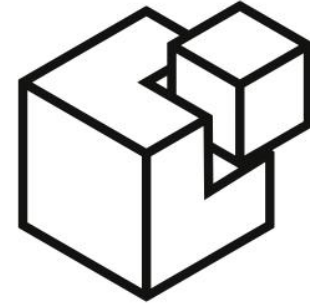




Configuration- management



puppet
labs



SALTSTACK



Chef

CFEngine



ANSIBLE
WORKS

Build**management**





Deploymentmanagement



Deployment?!?

A photograph of a person's hands typing on a keyboard in a multi-monitor workstation. The background shows several computer monitors displaying various data and code. A large, bold, red text overlay is centered on the image.

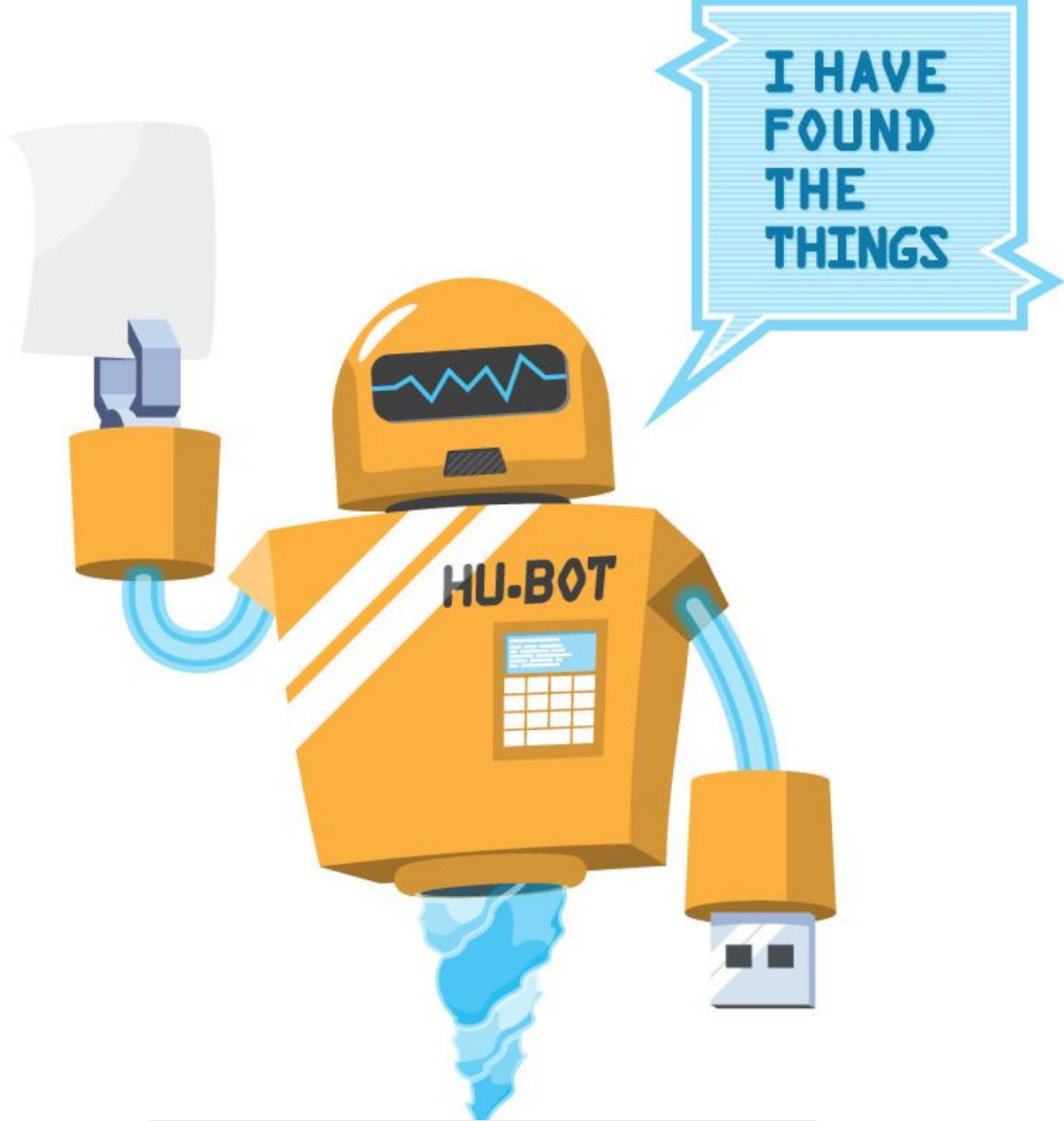
NEIN !!!



Deployment über Pakete

JENKINS-DEBIAN-GLUE (Mika Prokop)

JENKINS-RPM-BUILDER (Jan Horacek)



HUBOT



Messungen



STOCK	BID	OFFER	LAST	VOL
ALUMINA	5.82	5.83	5.83	6M
AMCOR	8.96	8.97	8.96	3M
AMP	7.10	7.11	7.10	15M
ANZ BANK	18.23	18.23	18.22	3M
BHP BLT	11.41	11.43	11.42	7M
COLES MYER	-	-	7.91	2HT
CWLTH BANK	28.31	28.36	28.33	2M
FOSTERS	4.46	4.47	4.47	6M
NAT BANK	30.97	31.00	30.99	4M
NEWS CORP	12.44	12.45	12.45	5M
RIO TINTO	35.08	35.12	35.12	2M
ST. GEORGE	21.37	21.40	21.40	7HT
TELSTRA	4.88	4.89	4.89	16M
WES. TRUST	3.48	3.49	3.49	4M
WESFARMER	28.13	28.17	28.13	5HT
WESTFIELD	14.06	14.07	14.07	7HT
WESTFLD AM	1.89	1.90	1.89	5M
WESTPAC	16.52	16.53	16.53	2M
WOODSIDE	13.74	13.76	13.75	1M
WOOLWORTHS	11.08	11.09	11.09	5M

STOCK	BID	OFFER	LAST	VOL
SSH MEDIC	0.105	0.11	0.11	44T
ST FRANCIS	0.021	0.022	0.022	5HT
ST SYNERGY	0.11	0.165	0.165	0
ST. BARBARA	0.085	0.086	0.085	4HT
STADIUM	0.205	0.22	0.205	4T
STARGAMES	1.21	1.24	1.24	4HT
STARPHARMA	0.65	0.66	0.65	4HT
STARTRACK	0.027	0.028	0.028	2HT
STEAMSHIP	1.90	2.10	1.94	0
STERICORP	0.17	0.175	0.175	26T
STHN EQUIT	-	-	0.155	0
STHN PAC.	0.26	0.265	0.265	5HT
STHN STAR	0.66	0.69	0.68	35T
STHNCROSS	9.66	9.75	9.70	85T
STHPOINTE	0.038	0.039	0.039	3M
STOCKFORD	-	-	0.03	0
STOCKLAND	4.89	4.90	4.90	11M
STOKES	0.265	0.35	0.265	0
STRAITRES	0.82	0.84	0.83	4HT
STRARCH	-	-	0.10	0

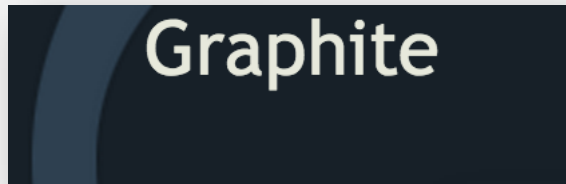
STOCK	BID	OFFER	LAST	VOL
STRAT MINS	0.235	0.24	0.24	2HT
STRAT POOL	0.245	0.25	0.25	0
STRATA	0.022	0.023	0.023	4HT
STRATATEL	0.069	0.08	0.066	0
STRATHFLD	0.13	0.135	0.135	2HT
STRIKER	0.065	0.066	0.066	3M
STRUCTURAL	0.495	0.50	0.50	0
STUART	0.72	0.73	0.72	5HT
STH COM	3.35	3.38	3.38	6HT
SUBSAHARA	0.057	0.058	0.058	5M
SUMMIT RES	0.062	0.068	0.061	3HT
SUN	0.095	0.099	0.092	0
SUN NET	12.45	12.46	12.45	3M
SUNCAPITAL	0.065	0.066	0.065	6HT
SUNDOWNER	0.155	0.165	0.155	45T
SUNLAND	1.18	1.20	1.18	1HT
SUNRAY.TV.	11.11	15.00	11.00	0
SUNSHINE G	0.275	0.265	0.275	14T
SUNTECH	0.031	0.033	0.031	2HT
SUNVEST	0.65	-	0.65	0

STOCK	BID	OFFER	LAST	VOL
ALL ORDINARIES	16.00	16.00	16.00	3283.0
200	1.00	1.00	1.00	1.00
300	1.00	1.00	1.00	1.00
400	1.00	1.00	1.00	1.00
500	1.00	1.00	1.00	1.00
600	1.00	1.00	1.00	1.00
700	1.00	1.00	1.00	1.00
800	1.00	1.00	1.00	1.00
900	1.00	1.00	1.00	1.00
1000	1.00	1.00	1.00	1.00
1100	1.00	1.00	1.00	1.00
1200	1.00	1.00	1.00	1.00
1300	1.00	1.00	1.00	1.00
1400	1.00	1.00	1.00	1.00
1500	1.00	1.00	1.00	1.00
1600	1.00	1.00	1.00	1.00
1700	1.00	1.00	1.00	1.00
1800	1.00	1.00	1.00	1.00
1900	1.00	1.00	1.00	1.00
2000	1.00	1.00	1.00	1.00
2100	1.00	1.00	1.00	1.00
2200	1.00	1.00	1.00	1.00
2300	1.00	1.00	1.00	1.00
2400	1.00	1.00	1.00	1.00
2500	1.00	1.00	1.00	1.00
2600	1.00	1.00	1.00	1.00
2700	1.00	1.00	1.00	1.00
2800	1.00	1.00	1.00	1.00
2900	1.00	1.00	1.00	1.00
3000	1.00	1.00	1.00	1.00
3100	1.00	1.00	1.00	1.00
3200	1.00	1.00	1.00	1.00
3300	1.00	1.00	1.00	1.00
3400	1.00	1.00	1.00	1.00
3500	1.00	1.00	1.00	1.00
3600	1.00	1.00	1.00	1.00
3700	1.00	1.00	1.00	1.00
3800	1.00	1.00	1.00	1.00
3900	1.00	1.00	1.00	1.00
4000	1.00	1.00	1.00	1.00
4100	1.00	1.00	1.00	1.00
4200	1.00	1.00	1.00	1.00
4300	1.00	1.00	1.00	1.00
4400	1.00	1.00	1.00	1.00
4500	1.00	1.00	1.00	1.00
4600	1.00	1.00	1.00	1.00
4700	1.00	1.00	1.00	1.00
4800	1.00	1.00	1.00	1.00
4900	1.00	1.00	1.00	1.00
5000	1.00	1.00	1.00	1.00
5100	1.00	1.00	1.00	1.00
5200	1.00	1.00	1.00	1.00
5300	1.00	1.00	1.00	1.00
5400	1.00	1.00	1.00	1.00
5500	1.00	1.00	1.00	1.00
5600	1.00	1.00	1.00	1.00
5700	1.00	1.00	1.00	1.00
5800	1.00	1.00	1.00	1.00
5900	1.00	1.00	1.00	1.00
6000	1.00	1.00	1.00	1.00
6100	1.00	1.00	1.00	1.00
6200	1.00	1.00	1.00	1.00
6300	1.00	1.00	1.00	1.00
6400	1.00	1.00	1.00	1.00
6500	1.00	1.00	1.00	1.00
6600	1.00	1.00	1.00	1.00
6700	1.00	1.00	1.00	1.00
6800	1.00	1.00	1.00	1.00
6900	1.00	1.00	1.00	1.00
7000	1.00	1.00	1.00	1.00
7100	1.00	1.00	1.00	1.00
7200	1.00	1.00	1.00	1.00
7300	1.00	1.00	1.00	1.00
7400	1.00	1.00	1.00	1.00
7500	1.00	1.00	1.00	1.00
7600	1.00	1.00	1.00	1.00
7700	1.00	1.00	1.00	1.00
7800	1.00	1.00	1.00	1.00
7900	1.00	1.00	1.00	1.00
8000	1.00	1.00	1.00	1.00
8100	1.00	1.00	1.00	1.00
8200	1.00	1.00	1.00	1.00
8300	1.00	1.00	1.00	1.00
8400	1.00	1.00	1.00	1.00
8500	1.00	1.00	1.00	1.00
8600	1.00	1.00	1.00	1.00
8700	1.00	1.00	1.00	1.00
8800	1.00	1.00	1.00	1.00
8900	1.00	1.00	1.00	1.00
9000	1.00	1.00	1.00	1.00
9100	1.00	1.00	1.00	1.00
9200	1.00	1.00	1.00	1.00
9300	1.00	1.00	1.00	1.00
9400	1.00	1.00	1.00	1.00
9500	1.00	1.00	1.00	1.00
9600	1.00	1.00	1.00	1.00
9700	1.00	1.00	1.00	1.00
9800	1.00	1.00	1.00	1.00
9900	1.00	1.00	1.00	1.00
10000	1.00	1.00	1.00	1.00

Warum? Wieso?

28400 WESFARMER 28.13

WOODSIDE 13.75 9200



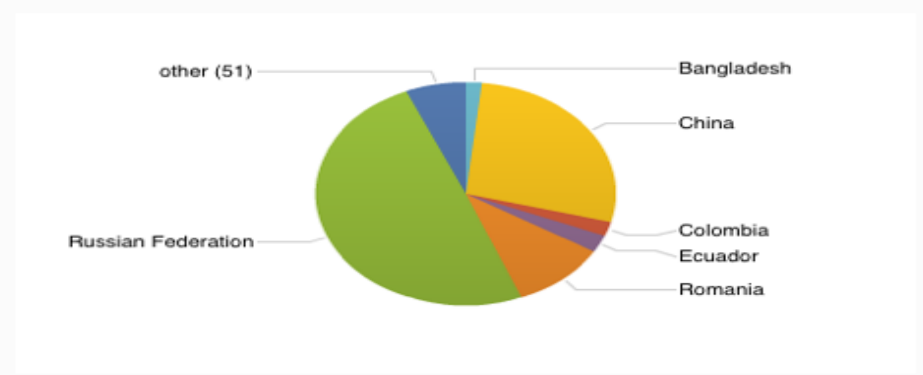
Kibana

Last 24 hours

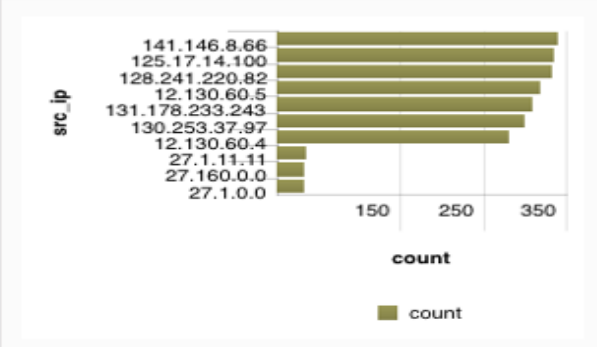
BotNet Destinations



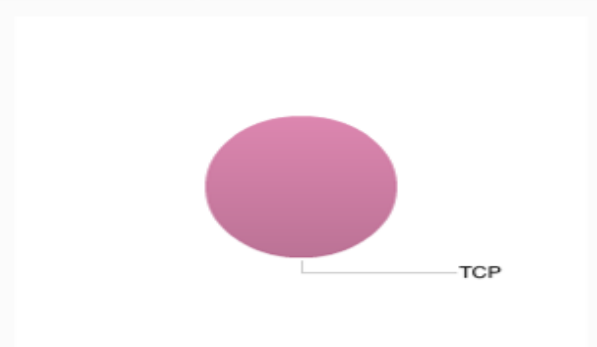
Bot Net Traffic by Destination Country



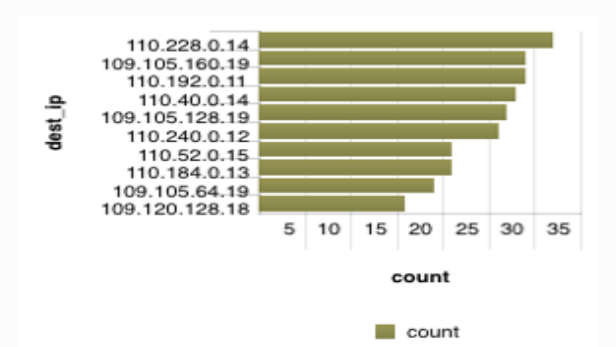
BotNet Events - Top Source IP



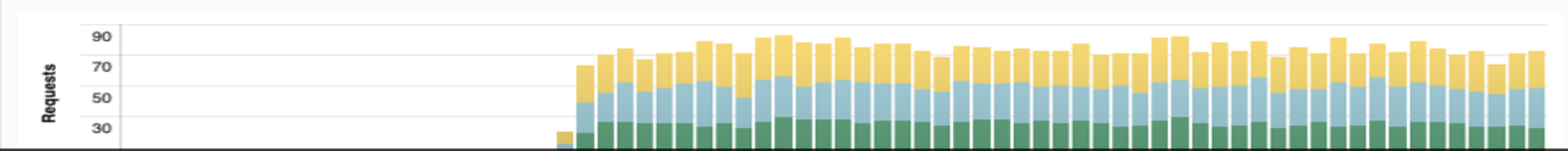
BotNet Events by Protocol



BotNet Events - Top Destination IP



BotNet Filter Actions over Time



Generator I

Generator II

Generator III



Monitoring

ShinKen

Nagios®



ICINGA

ZABBIX



Schnelles **Feedback**

Verbesserung

Trenderkennung

Voraussetzungen für
C.I. + C.D.



Inselwissen?!?



**INVEST IN
SHARING**



Dokumentation!

INVEST IN
SHARING

A photograph of a concrete floor. In the upper center, there is a stencil of a person's face with large eyes. Below it, the words "INVEST IN SHARING" are stenciled in a bold, sans-serif font. A white rectangular box is overlaid on the image, containing the text "Wissen teilen!".

Wissen teilen!

**INVEST IN
SHARING**

Teamübergreifend





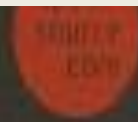
github

**Plattformen
nutzen!**



THE OPEN SOURCE

Communities nutzen!



15 Year Anniversary





Demos



JENKINS.grml.org

2013.02

```
grml@grml ~ % grml-version
grml64-full 2013.02 Release Codename Grumpy Grinch [2013-02-26]
grml@grml ~ %
```





VAGRANT

Buzzword **Bingo**

aka Agenda

VORSTELLUNG	DEVOP	TOOLS
AUSTAUSCH	KULTUR	AUTOMATISIERUNG
MESSUNGEN	BEISPIELE	KONFLIKTE

BINGO

Noch
Fragen?

